

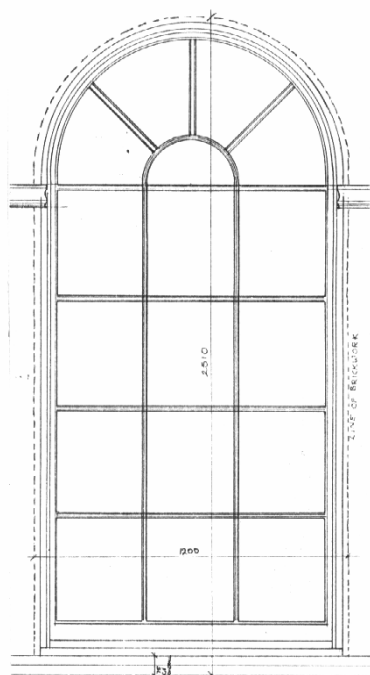
PROJECTS.....

**A COUNTRY HOUSE IN NORTH ESSEX**

**NEW ORANGERY**



The house was extended to the south for the new orangery, shown above before the terrace and lakes were formed. There are raised water features which pass from outside to inside, with rills to carry the water down to further pools set within the Indian sandstone floor. The interior climate is maintained for comfortable occupation whilst providing semi arid conditions for planting. The humidity and temperature are controlled by a computerised system linked to automatic shading, watering, and window opening pistons.



*Detail of domed glass skylight.*

